

 Add us as a Preferred Source on Google 

PERSPECTIVES / SPECTRUM

Leo Kanner's 1943 paper on autism

Donald T. was not like other 5-year-old boys. Leo Kanner knew that the moment he read the 33-page letter from Donald's father that described the boy in obsessive detail as "happiest when he was alone... drawing into a shell and living within himself... oblivious to everything around him."

BY **GERALD D. FISCHBACH**
7 DECEMBER 2007 | 6 MIN READ

This article is more than five years old.

Neuroscience—and science in general—is constantly evolving, so older articles may contain information or theories that have been reevaluated since their original publication date.

LISTEN TO THIS STORY:

 0:00 / 7:22

 APPLE  SPOTIFY  YOUTUBE

Donald T. was not like other 5-year-old boys.

Leo Kanner knew that the moment he read the 33-page letter from Donald's father that described the

WE VALUE YOUR PRIVACY



When Kanner met Donald, his suspicions were confirmed. In addition to the symptoms the letter described, Kanner noted Donald's explosive, seemingly irrelevant use of words. Donald referred to himself in the third person, repeated words and phrases spoken to him, and communicated his own desires by attributing them to others.

Kanner described Donald and ten other children in a 1943 paper entitled, *Autistic Disturbances of Affective Contact*¹. In this initial description of 'infantile autism', which went on to become a classic in the field of clinical psychiatry, Kanner described a distinct syndrome instead of previous depictions of such children as feeble-minded, retarded, moronic, idiotic or schizoid. In the words of his contemporary Erwin Schrödinger, Kanner "thought what nobody has yet thought, about that which everybody sees."

In recent years, experts have called attention to the inability of children with autism to understand that others have beliefs that are different than their own. These deficits prevent normal social intercourse, including the ability of the children to engage in joint fantasy or to empathize with the feelings of others.

Kanner borrowed the term 'autism' from Eugene Bleuler, who had coined it to describe the inward, self-absorbed aspects of schizophrenia in adults. But Kanner did not consider infantile autism an early form or prodrome of schizophrenia. The clinical signs were not identical and, unlike schizophrenia, Kanner's patients seemed to have autism from birth.

Humane approach:

Kanner was born in Austria and educated in Berlin. He came to the U.S. in 1924. In 1930, he moved to Johns Hopkins University, where he founded the first child psychiatry clinic in the country. Based largely on his clinical experience, he then wrote a textbook that defined the field of child psychiatry. His humanism is evident in his lifelong fight against the abuse of children with autism and intellectual disability, and his enduring concern for their families. He also made extraordinary efforts to help physicians and scientists escape from Nazi-controlled territories.

The spectrum of clinical conditions labeled autism soon expanded beyond Kanner's first description. In 1944, one year after Kanner's paper, Hans Asperger described children that he also called 'autistic', but who seemed to have high non-verbal intelligence quotients and who used a large vocabulary appropriately. Confusion remains about the distinction between Asperger syndrome and high-functioning autism.

It is remarkable that although Kanner and Asperger were born in Austria and educated in Germany, and

WE VALUE YOUR PRIVACY



disorders and intellectual disability at one end, and with behaviors now thought to be normal at the other. Repeated revision and expansion of the diagnostic categories has probably contributed to the gradual increase in the reported prevalence of autism spectrum disorders that has been evident since the mid-1980s.

Controversies over clinical definitions may only be resolved with the discovery of biomarkers — biochemical, anatomical or physiological measures — that are specific to one or more aspects of autism. Biomarkers are essential for an understanding of brain mechanisms underlying the various autisms, and for the development of useful therapeutics.

Innate disorder:

Kanner appreciated the need for biomarkers from the beginning. He noted a tendency toward autistic behaviors in some families and described autism as an ‘innate’ disorder. He foresaw the need for research into the genetics of autism at about the same time that DNA was first identified as the bearer of genetic information. Today, genetics offers the best hope for discovery of relevant biomarkers.

It took courage to offer a hypothesis of innate determinants in 1943. The prevailing view of the day, based on Freudian psychology, had been that autism was due to poor parenting, with much of the blame placed on ‘frigid’ mothers accused of rejecting their children.

Studies of identical twins have since made it clear that genetics is a powerful force in autism’s etiology. But it is also clear that autism is not inherited in a simple Mendelian fashion. Many genes, perhaps as many as 50, may be involved, each one adding to the risk of clinically manifest autism. As these genes are uncovered, clinical descriptions will be further revised, and some may disappear entirely.

We may not speak any longer of autism or schizophrenia or bipolar disorder. Rather, traits that share the same underlying brain mechanisms, and that may fall into similar therapeutic categories, may be emphasized. The relation between autism and other disorders will be debated on a different level.

The search for genetic factors that enhance the risk of autism is now in high gear. Evidence for changes in DNA sequence, structural rearrangements of DNA including sub-microscopic, *de novo* copy number variants, and epigenetic modifications of DNA, have all been reported in recent years. Success in this effort will lead to a clearer idea about mechanisms that disrupt normal brain development and underlie the onset of autism. Identification of such risk factors and how they might interact with environmental influences will be only the first step in this effort. Progress will speed up once the entire cast of

WE VALUE YOUR PRIVACY



The need for research into the biological bases of autism and of other neuropsychiatric disorders is urgent. In the midst of the current excitement, Kanner's paper is worth rereading. Not only is it the source of much of what we do today, but it can provide new clues for those prepared to receive them. Future attempts to resolve the neural bases of autism will rely heavily on this seminal work.

References:

Reproduced without permission of the author, for educational purposes only, according to the Fair Use doctrine.

1. Kanner L. Autistic disturbances of affective contact. *Nervous Child* 2, 217-250 (1943) [PDF](#)

Sign up for the weekly *Spectrum* newsletter.

Stay current with the latest advancements in autism research.

EMAIL@ADDRESS.COM SUBMIT

TAGS:

[SPECTRUM](#), [ASPERGER SYNDROME](#), [AUDIO RESEARCH NEWS](#), [AUTISM](#), [BIOMARKERS](#), [BRAIN IMAGING](#), [COPY NUMBER VARIATION](#), [DE NOVO MUTATIONS](#), [DIAGNOSIS](#), [DSM-IV](#), [EMPATHY](#), [ENVIRONMENT](#), [EPIGENETICS](#), [GENES](#), [INTELLECTUAL DISABILITY](#), [IQ](#), [LANGUAGE](#), [PDD-NOS](#), [REPETITIVE BEHAVIORS](#), [SCHIZOPHRENIA](#), [SIGNS AND SYMPTOMS](#), [SPECIAL REPORT: THE NEW HISTORY OF AUTISM](#), [THE BRAIN](#), [TWINS](#)

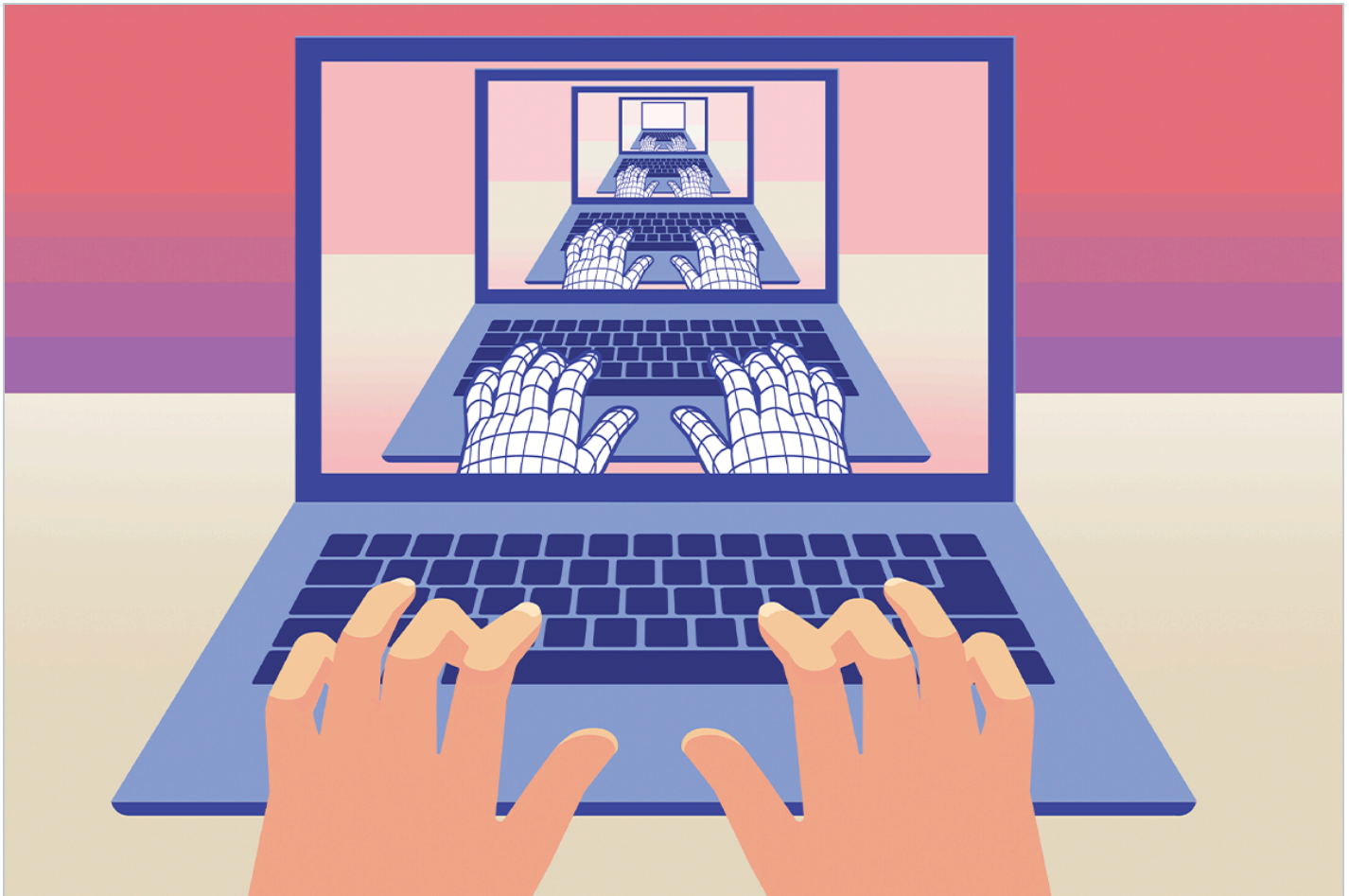


Gerald D. Fischbach

Chief Scientist, Simons Foundation

SHARE THIS ARTICLE:

WE VALUE YOUR PRIVACY ×



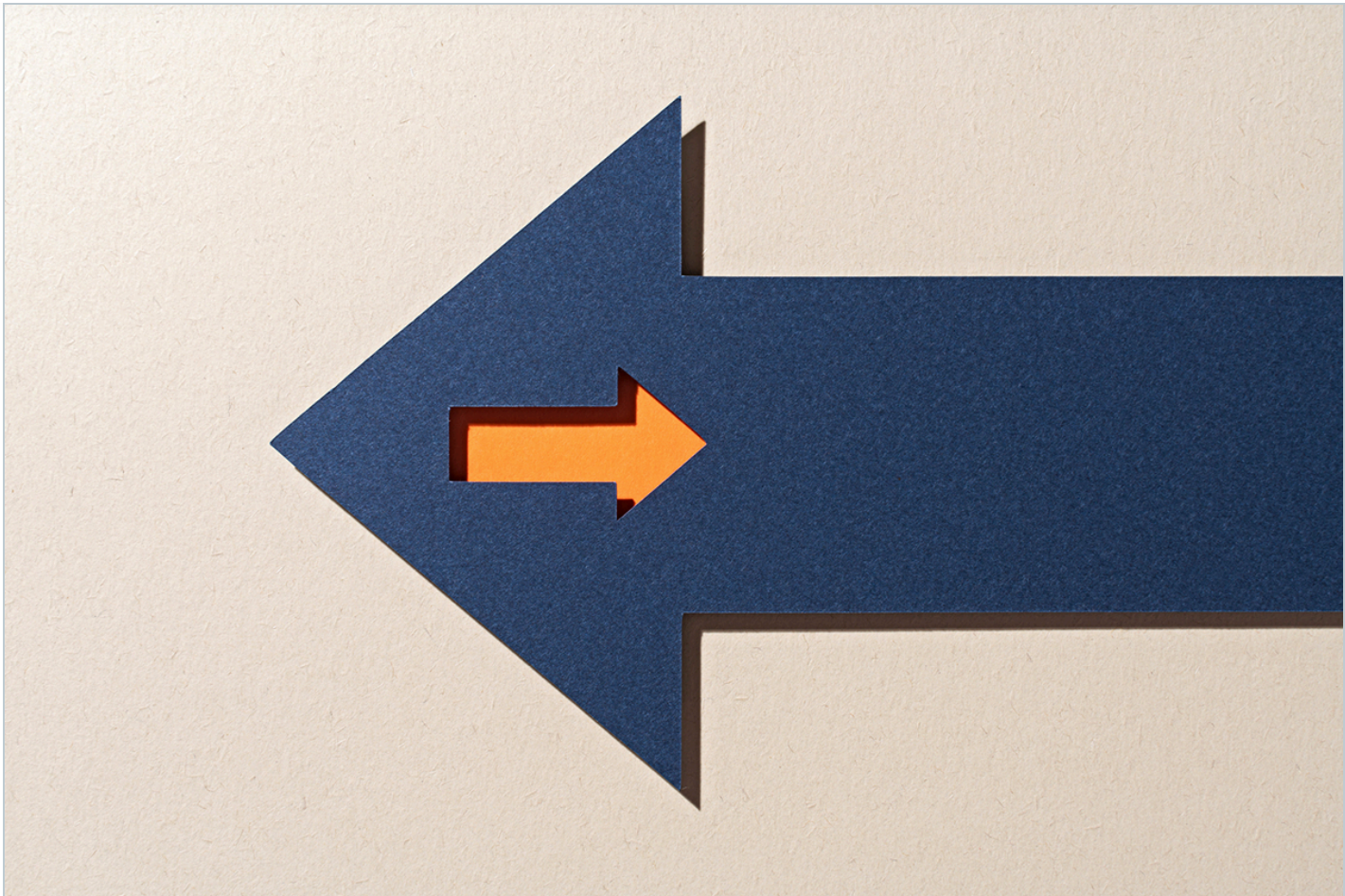
FROM BENCH TO BOT

Why expertise won't protect you from AI's influence

BY **TIM REQUARTH**
4 MAY 2026 | 6 MIN READ

WE VALUE YOUR PRIVACY

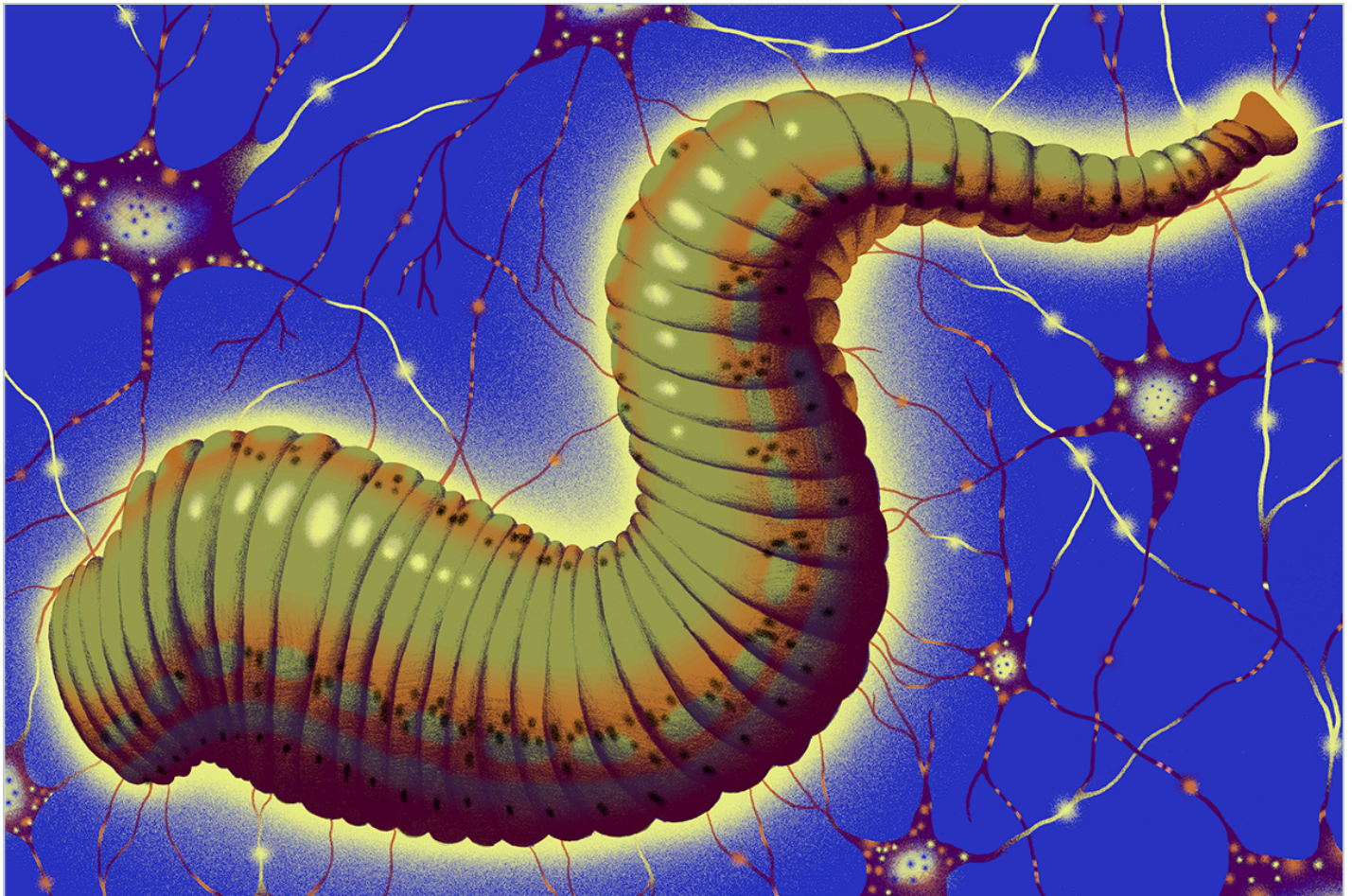




POLICY

European Research Council backtracks on stricter grant resubmission rules

BY LAUREN SCHENKMAN
1 MAY 2026 | 4 MIN READ



NEURO'S ARK

What leeches reveal about movement

BY CLAUDIA LÓPEZ LLOREDA
1 MAY 2026 | 5 MIN READ

WE VALUE YOUR PRIVACY



3 Comments

1 Login ▾

G

Join the discussion...

LOG IN WITH

OR SIGN UP WITH DISQUS ?

Name

♡ 2

Share

Best Newest Oldest



Tuala Shields

6 years ago

"In recent years, experts have called attention to the inability of children with autism to understand that others have beliefs that are different than their own. These deficits prevent normal social intercourse, including the ability of the children to engage in joint fantasy or to empathize with the feelings of others."

This is not correct. Children with autism may have difficulty in those areas, but they are able to be taught. Left to themselves, they may never master these things. But with help, they are able to learn.

1 0 Reply ↗

F

fu → Tuala Shields

2 years ago

Crazy concept..very absurd considering how deeply self involved the average "others" are. Feels very much like a projection, or a punishing lie for not conforming to an authoritarian didact.

0 0 Reply ↗

F

fu → Tuala Shields

2 years ago

Normal social intercourse is generally quite cruel, why punish an outsider for not submitting to it?

WE VALUE YOUR PRIVACY



Special report: The state of neuroscience

Where do the field's practitioners think it is headed?

[READ MORE](#)

[NEWS](#)

[PERSPECTIVES](#)

[FEATURES](#)

[PROFILES](#)

[THIS PAPER CHANGED MY LIFE](#)

[PODCASTS](#)

[VIDEOS](#)

[BOOKS](#)

[THE TRANSMITTER BOOKS](#)

[EVENTS](#)

[COURSES](#)

 [SPECTRUM](#)

[ABOUT THE TRANSMITTER](#)

[THE TEAM](#)

[PARTNERS AND COLLABORATORS](#)

[NEWSLETTERS AND ALERTS](#)

[EARLY-CAREER RESEARCHER RESOURCE CENTER](#)

[MENTORSHIP DIRECTORY](#)

WE VALUE YOUR PRIVACY



[AI EDITORIAL POLICY](#)

[PRIVACY POLICY](#)

[ACCESSIBILITY](#)

[CONTACT US](#)

FOLLOW THE TRANSMITTER:



Curating neuroscience, connecting community

An editorially independent publication supported by the Simons Foundation

© 2026 Simons Foundation

WE VALUE YOUR PRIVACY

